

# CSF SERIES

Superior performance for  
Shovel and Draglines



7 Bazalgette Cres, Dandenong South,  
VIC 3175, Australia

T 1300 COMPRESSOR  
F +61 3 9703 9053

[sullair.com.au](http://sullair.com.au)

\*With our policy of continuous improvement, we reserve the right to change or discontinue at any time, specifications or designs without notice. Note: All images are for illustration purposes only. E&OE

CSF1219

[sullair.com.au](http://sullair.com.au)

**CHAMPION**



# THE CSF SERIES



### CLEVER COMPONENT PROTECTION

The harsh environment design removes the risk of component damage with an IP55 TEFC MEPS2 motor with Class F insulation. A IP65 electrical enclosure allows the compressor to perform in wet and dusty environments.



### EFFICIENT, RELIABLE AIR FILTRATION

A two-stage intake filter with cyclonic pre-cleaner, prolongs the life of the airend, air-oil separator element and oil filter. The large size reduces pressure drop and extends element life.



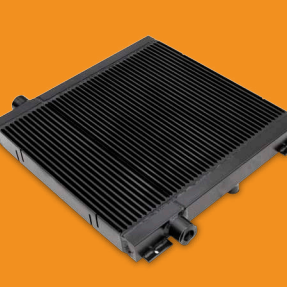
### ELECTRONIC CONTROLLER FOR FLEXIBLE CONTROL

Provides advanced protection. Simple or sophisticated remote monitoring and control. Energy saving sequencing for up to eight compressors.



### MADE TO LAST THE DISTANCE WITH SULLAIR

**CHAMPION** compressors go beyond Australian industry standards. Engineered for 100% duty, 24/7, without risk of damage. The energy efficient Sullair airend has a heavy duty advanced profile that delivers more air for less power.



### TOUGH AUSTRALIAN CONDITIONS COOLING SYSTEM

Highly efficient aluminium block oil cooler and aftercooler matched with a generous sized fan. Excellent temperature management prevents oil oxidation and reduces 'vapour' oil carry-over. Designed to continuously operate in hot, dusty conditions of 50°C ambient.



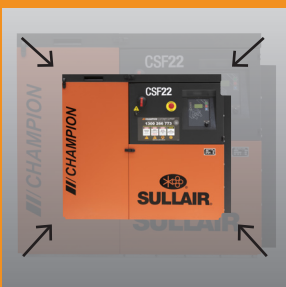
### THOUGHTFUL SERVICE ACCESS

Smart, 'lift off' cabinet system delivers lower maintenance costs for the machine and savings for you. Plus your CSF can be placed against a wall for greater space savings.



### ENHANCED SAFETY

Internal guarding of moving parts and electrical components that go beyond Australian safety standards. A thoughtful acoustic enclosure makes for an ultra quiet package that can be used in normal workshop environments to save space. EH&S initiatives ensure that **CHAMPION** thinks 'safety first'.



### SPACE SAVING

Unique space saving design tailored to suit minimal spaces, and ideal solution for Draglines and Rope Shovel installations where installation space is a premium

# THE CSF SERIES

Inside and out, the CSF delivers longer life and lower running costs in a powerful performing and heavy duty design

Created and assembled locally to withstand harsh Australian conditions, they're suited to ambient temperatures of up to 50°C, can handle humidity and dust, and includes dirty environment inlet filtration packs as standard.

Benefit from heavy duty machine that delivers a lifetime of tough performance. The quiet and thoughtful design of the CSF machine saves both space and money.

The Champion CSF series is a market proven industrial compressor being relaunched due to market demands.



### TECHNICAL SPECIFICATIONS

MODEL	MAX PRESSURE		CAPACITY - FREE AIR DELIVERY			MOTOR RATING		NOISE LEVEL DB(A)	DIMENSION	APPROX WEIGHT	AIR OUTLET DISCHARGE SIZE
	PSI	BAR	L/s	M³/Min	CFM	kW	HP		L x W x H (mm)		
CSF 22	109	7.5	61	3.68	130	22	30	71	1316 X 780 X 1105	540	1" BSPF
	145	10.0	50	3.03	107						
	189	13.0	43	2.58	91						